

**PROPRIETARY NOTE**

THIS SPECIFICATION IS THE PROPERTY OF FANNAL AND SHALL NOT BE REPRODUCED OR COPIED WITHOUT THE WRITTEN PERMISSION OF FANNAL AND MUST BE RETURNED TO FANNAL UPON ITS REQUEST



SPEC. NUMBER	PRODUCT GROUP	REV.	ISSUE DATE	PAGE
AM-0430027A	TFT- LCM	V0	2023-03-31	1 OF 30


**FN0430D027A****Product Specification Rev.V0**

BUYER	
SUPPLIER	FANNAL Electronics CO., LTD
FG-Code	FN0430D027A

☐ Preliminary Specification☒ Approval Specification

ITEM	BUYER SIGNATURE	DATE
<u>Quality</u>	_____	_____
<u>R&amp;D</u>	_____	_____
<u>Approved</u>	_____	_____


ITEM	SUPPLIER SIGNATURE	DATE
Prepared	<u>DONG</u>	<u>2023-03-31</u>
Reviewed	<u>XIONG</u>	<u>2023-03-31</u>
Approved	<u>JACK</u>	<u>2023-03-31</u>

PRODUCT GROUP	REV	ISSUE DATE	
TFT- LCM PRODUCT	V0	2023-03-31	
SPEC. NUMBER AM-0430027A	SPEC . TITLE FN0430D027A Product Specification		PAGE 2 OF 30

REVISION HISTORY
------------------


REV.	Page.	DESCRIPTION OF CHANGES	DATE	PREPARED
V0		Initial Release	2023-03-31	JACK

--

PRODUCT GROUP	REV	ISSUE DATE	
TFT- LCM PRODUCT	V0	2023-03-31	
SPEC. NUMBER AM-0430027A	SPEC. TITLE FN0430D027A Product Specification		PAGE 3 OF 30

## Contents

No.	Items	Page
1.0	General Description	4
2.0	Mechanical Drawing	5
3.0	Absolute Maximum Ratings	6
4.0	Electrical Specifications	7
5.0	Interface Description	8
6.0	Optical Specifications	20
7.0	Reliability Test	22
8.0	Precautions	23
9.0	Packing Information	27
10.0	Visual Inspection Criteria For All Customers	28

PRODUCT GROUP	REV	ISSUE DATE	
TFT- LCM PRODUCT	V0	2023-03-31	
SPEC. NUMBER AM-0430027A	SPEC. TITLE FN0430D027A Product Specification		PAGE 4 OF 30

1.0 General Description /一般说明

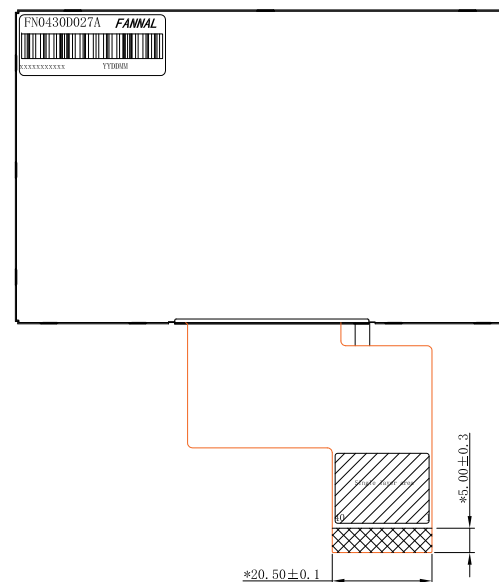
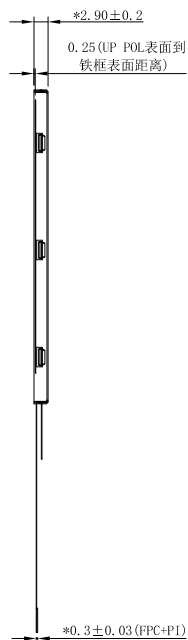
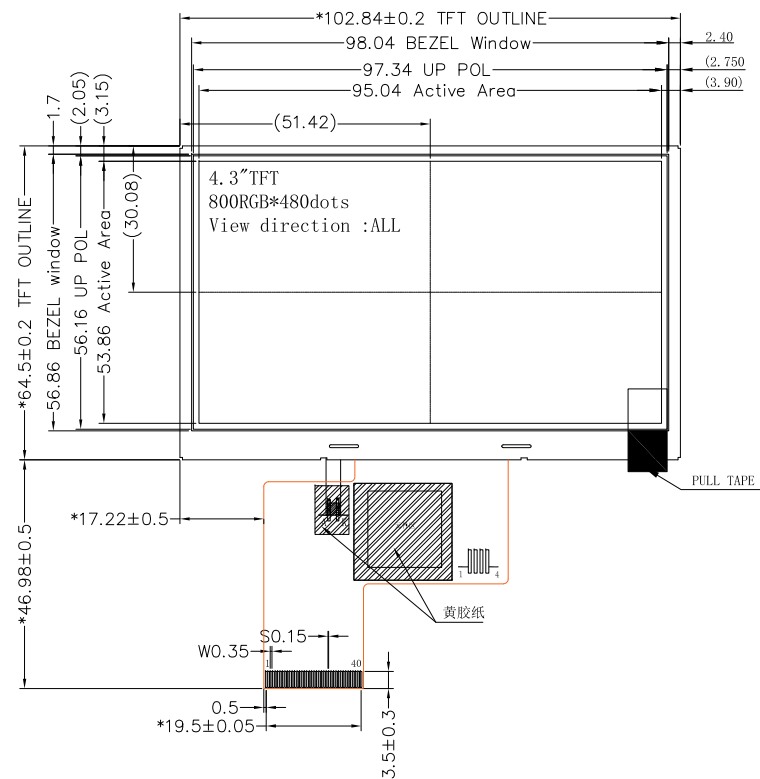
1.1 Application /应用

- ☒ Industrial
- ☐ Fitness equipment
- ☐ POS
- ☐ Automotive
- ☐ Rail traffic
- ☒ Digital & Consumer
- ☐ Medical
- ☐ Military-industrial
- ☐ Outdoor highlight

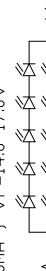
1.2 General Specification /通用技术条件

Parameter	Specification	Unit
LCD size	4.3 (Diagonal)	inch
Resolution Ratio	800(H)×480(V)	pixels
Pixel Pitch	0.1188x0.1122(V)	mm
Active Area	95.04(H)×53.856(V)	mm
Module Size	102.84(W)×64.5(H)×2.9(D)	mm
Display Mode	Normally Black	
Interface	RGB 24bit	
Pixel arrangement	RGB-Vertical Stripe	
View Direction	ALL	
Power Supply	3.3	V
Power Consumption	0.8	W
Weight	36.5	g
Luminance	350 (TYP.)	cd/m²
Driver IC	ST7265	

VER.	SYMBOL	AMENDMENT	SIGN	DATE
A		First issue	LCF	2023-04-25




LED CIRCUIT DIAGRAM:  
BACKLIGHT: 5S2P=10 CHIP-WHITE LED  
IF=40mA ; VF=14.0~17.0V



SIZE	4.3 Inch	Interface	RGB 24bit	PIN	SYMBOL	PIN	SYMBOL	PIN	SYMBOL	PIN	SYMBOL	PIN	SYMBOL
Resolution Ratio	800x480	Power Supply	3.3V	1	LEDK	13	G0	25	B4	37	XR(NC)		
LCD Type	<input checked="" type="checkbox"/> Transmissive <input type="checkbox"/> Transflective <input type="checkbox"/> Reflective	Connection Mode	<input checked="" type="checkbox"/> FPC Plug-in <input type="checkbox"/> FPC Soldering <input type="checkbox"/> Connector	2	LEDA	14	G1	26	B5	38	YB(NC)		
Display Mode	<input checked="" type="checkbox"/> Normally Black <input type="checkbox"/> Normally White	Driver IC	ST7265-G6-E43	3	GND	15	G2	27	B6	39	XL(NC)		
Display Direction	<input type="checkbox"/> 6 <input type="checkbox"/> 12 <input type="checkbox"/> 3 <input type="checkbox"/> 9 <input checked="" type="checkbox"/> Free	Operation Temperature	-20~+70	4	VCC	16	G3	28	B7	40	YU(NC)		
Contrast Ratio	1200:1	Storage Temperature	-30~+80	5	R0	17	G4	29	GND				
Luminance	350(Typ.) 300(Min.)	Environmental Requirements	<input checked="" type="checkbox"/> RoHS-2.0 <input type="checkbox"/> REACH	6	R1	18	G5	30	DCLK				
Uniformity	80% Min	Unmarked Tolerance	±0.2mm	7	R2	19	G6	31	DISP				
				8	R3	20	G7	32	HSYNC				
				9	R4	21	B0	33	VSYNC				
				10	R5	22	B1	34	DE				
				11	R6	23	B2	35	NC				
				12	R7	24	B3	36	GND				

DRAWN	LCF	TITLE	Drawing NO: FN0430D027A
CHECKED	DONG	MODULE SPEC.	Project No:
APPROVED	1824		
CSR APPROVED			
Customer No:			
SHEET 1 OF 1		FANNAL ELECTRONICS CO., LTD	


PRODUCT GROUP	REV	ISSUE DATE	
TFT- LCM PRODUCT	V0	2023-03-31	
SPEC. NUMBER AM-0430027A	SPEC. TITLE FN0430D027A Product Specification		PAGE 6 OF 30

**3.0 ABSOLUTE MAXIMUM RATINGS /绝对最大额定值**

The followings are maximum values which, if exceed, may cause faulty operation or damage to the unit.

Parameter	Symbol	Min.	Max.	Unit
Power Supply Voltage	VDD	-0.3	4.0	V
IO Supply Voltage	VDDI	-0.3	4.0	V
Operating Temperature	T <sub>OP</sub>	-20	70	°C
Storage Temperature	T <sub>ST</sub>	-30	80	°C
Operating Ambient Humidity	H <sub>OP</sub>	10	60°C 90%RH	RH
Storage Humidity	H <sub>ST</sub>	10	60°C 90%RH	RH

NOTE: If the absolute maximum rating of even is one of the above parameters is exceeded even momentarily, the quality of the product may be degraded. Absolute maximum ratings, therefore, specify the values exceeding which the product may be physically damaged. Be sure to use the product within the range of the absolute maximum ratings.

PRODUCT GROUP		REV	ISSUE DATE	
TFT- LCM PRODUCT		V0	2023-03-31	
SPEC. NUMBER AM-0430027A	SPEC. TITLE FN0430D027A Product Specification			PAGE 7 OF 30

## 4.0 ELECTRICAL SPECIFICATIONS/电气规范

### 4.1 TFT LCM Module

[Ta =25 ± 2 °C]

Parameter	Symbol	Min.	Typ.	Max.	Unit
Supply voltage	VDD	3.1	3.3	3.6	V
IO Supple Voltage	VDDI	3.1	3.3	3.6	V
Supply Current	IDD	-	-	30	mA
Level input voltage	V <sub>IH</sub>	0.7VDDI		VDDI	V
	V <sub>IL</sub>	GND		0.3VDDI	V
Level output voltage	V <sub>OH</sub>	VDDI-0.4		VDDI	V
	V <sub>OL</sub>	GND		VDDI+0.4	V


### 4.2 Backlight Driving Conditions /背光驱动条件

[Ta =25 ± 2 °C]

Parameter	Symbol	Min.	Typ.	Max.	Unit	Notes
Forward Current Voltage	V <sub>F</sub>	14.0	15.5	17.0	V	Note 1
Forward Current	I <sub>f</sub>	-	40	-	mA	
Backlight Power Consumption	W <sub>bl</sub>	-	0.31	-	W	
LED Life Time	-	30000	-	-	Hrs	Note 2

Note1: Under LCM operating, the stable forward current should be inputted. And forward voltage is for reference only.

Note2: Optical performance should be evaluated at Ta=25°C. if LED is driven by high current, high ambient temperature & Humidity condition. The life time of LED will be reduced. Operating life means brightness goes down to 50% initial brightness. Typical operating life time is estimated data.

PRODUCT GROUP	REV	ISSUE DATE	
TFT- LCM PRODUCT	V0	2023-03-31	
SPEC. NUMBER AM-0430027A	SPEC. TITLE FN0430D027A Product Specification		PAGE 8 OF 30


5.0 Interface Description/接口说明

Connector Name/Designation	Interface Connector/Interface Card
Type Part Number	FPC 40PIN 0.5Pitch
Mating Housing Part Number	FH28-40S-0.5SH


5.1 Pin assignment for LCM module /模组引脚分配

Pin No.	Symbol	Description	Note.
1	LEDK	LED Cathode	
2	LEDA	LED Anode	
3	GND	Power Ground	
4	VCC	Power Source	
5	R0	Red Data Signal (LSB)	
6	R1	Red Data Signal	
7	R2	Red Data Signal	
8	R3	Red Data Signal	
9	R4	Red Data Signal	
10	R5	Red Data Signal	
11	R6	Red Data Signal	
12	R7	Red Data Signal	
13	G0	Green Data Signal (LSB)	
14	G1	Green Data Signal	
15	G2	Green Data Signal	
16	G3	Green Data Signal	
17	G4	Green Data Signal	
18	G5	Green Data Signal	
19	G6	Green Data Signal	
20	G7	Green Data Signal	
21	B0	Blue Data Signal (LSB)	
22	B1	Blue Data Signal	
23	B2	Blue Data Signal	
24	B3	Blue Data Signal	
25	B4	Blue Data Signal	



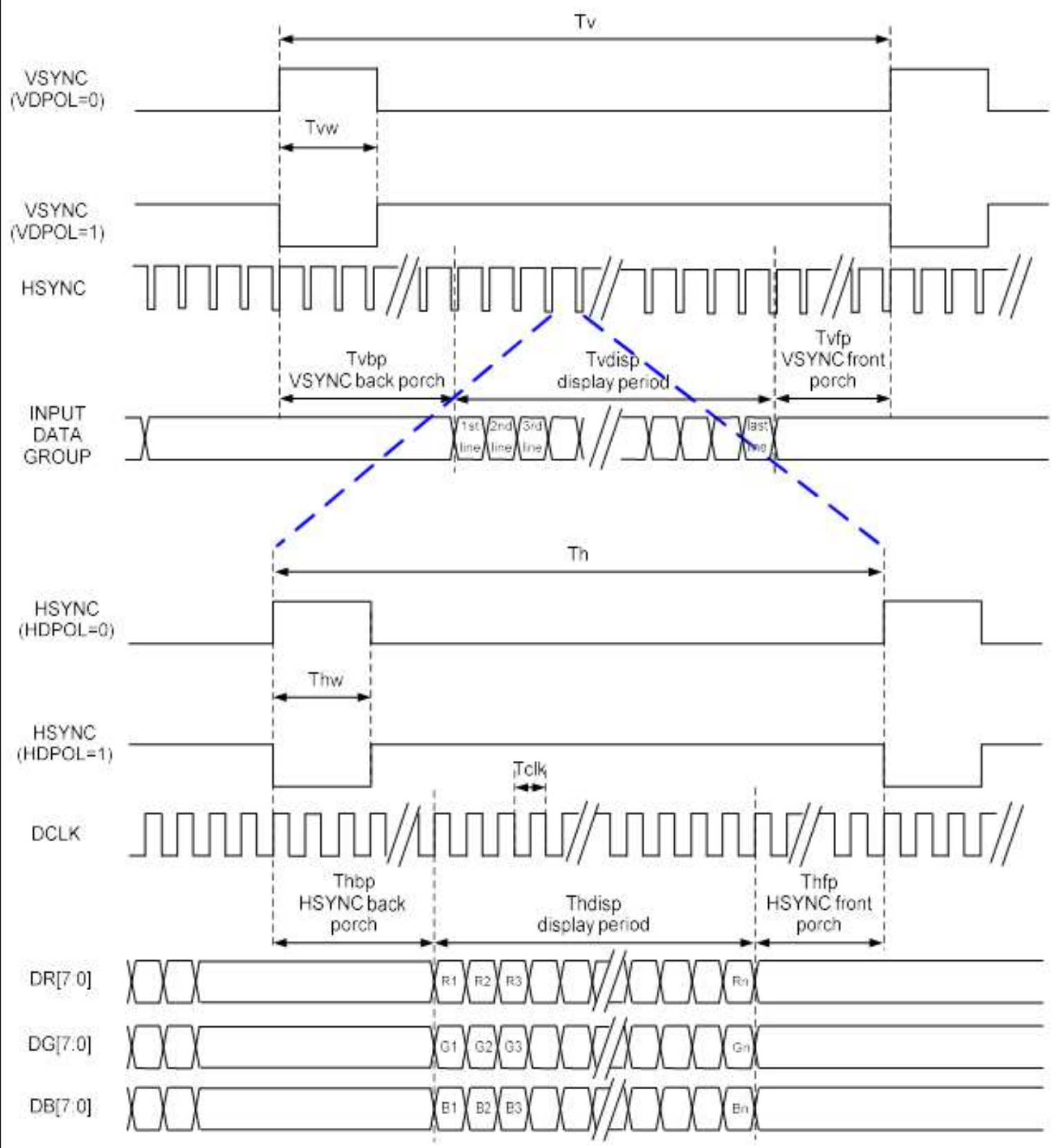
PRODUCT GROUP	REV	ISSUE DATE	
TFT- LCM PRODUCT	V0	2023-03-31	
SPEC. NUMBER AM-0430027A	SPEC. TITLE FN0430D027A Product Specification		PAGE 9 OF 30


Pin No.	Symbol	Description	Note.
26	B5	Blue Data Signal	
27	B6	Blue Data Signal	
28	B7	Blue Data Signal	
29	GND	Power Ground	
30	DCLK	Clock Signal to Sample each data	
31	DISP	Display ON/OFF Signal	
32	HSYNC	Horizontal Synchronizing Signal	
33	VSYNC	Vertical Synchronizing Signal	
34	DE	Input Data enable control	
35	NC	No Connection	
36	GND	Power Ground	
37	XR(NC)	Touch Panel PIN	
38	YD(NC)	Touch Panel PIN	
39	XL(NC)	Touch Panel PIN	
40	YU(NC)	Touch Panel PIN	

PRODUCT GROUP	REV	ISSUE DATE	
TFT- LCM PRODUCT	V0	2023-03-31	
SPEC. NUMBER AM-0430027A	SPEC. TITLE FN0430D027A Product Specification		PAGE 10 OF 30

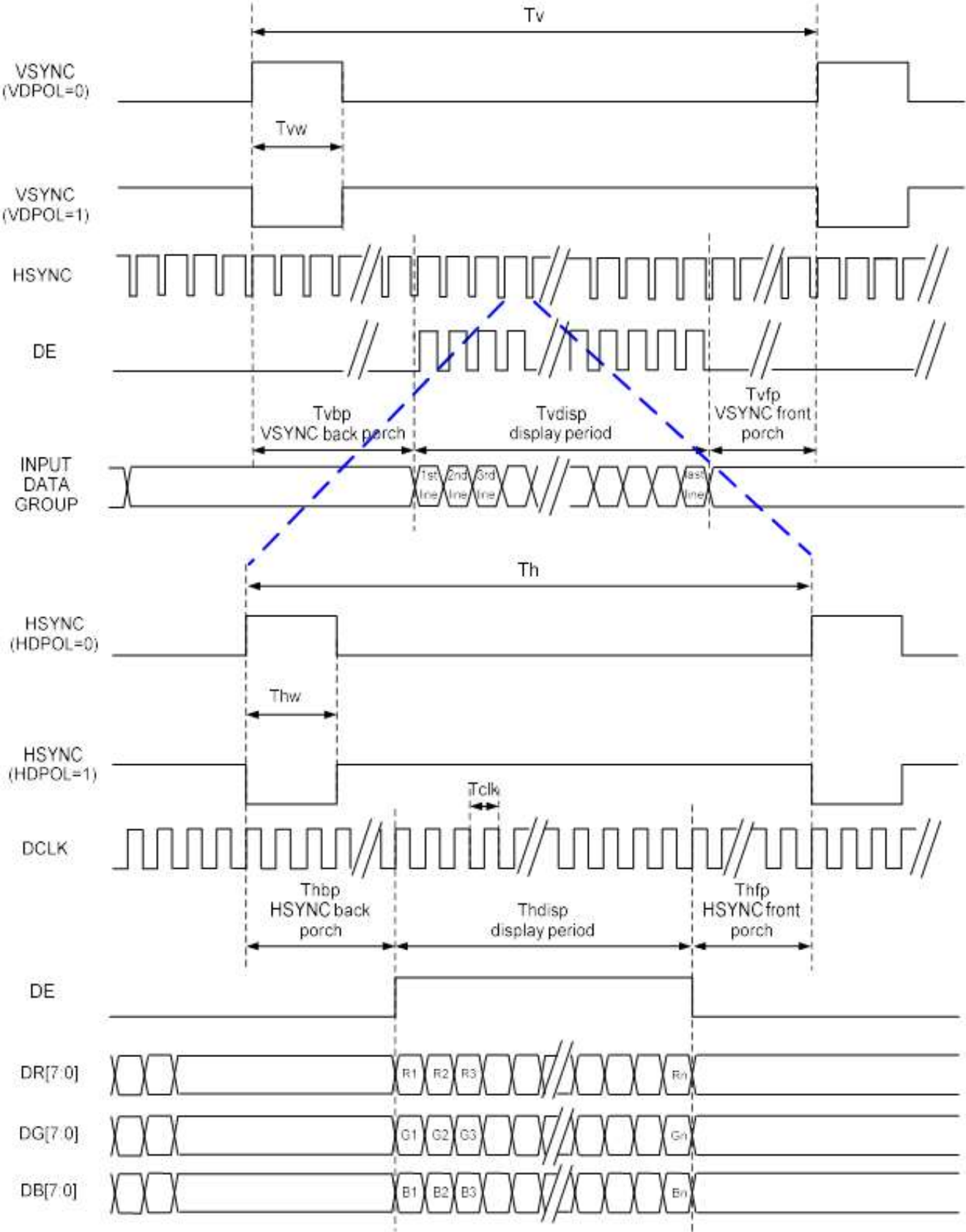
5.2 RGB Interface

5.2.1 SYNC Mode

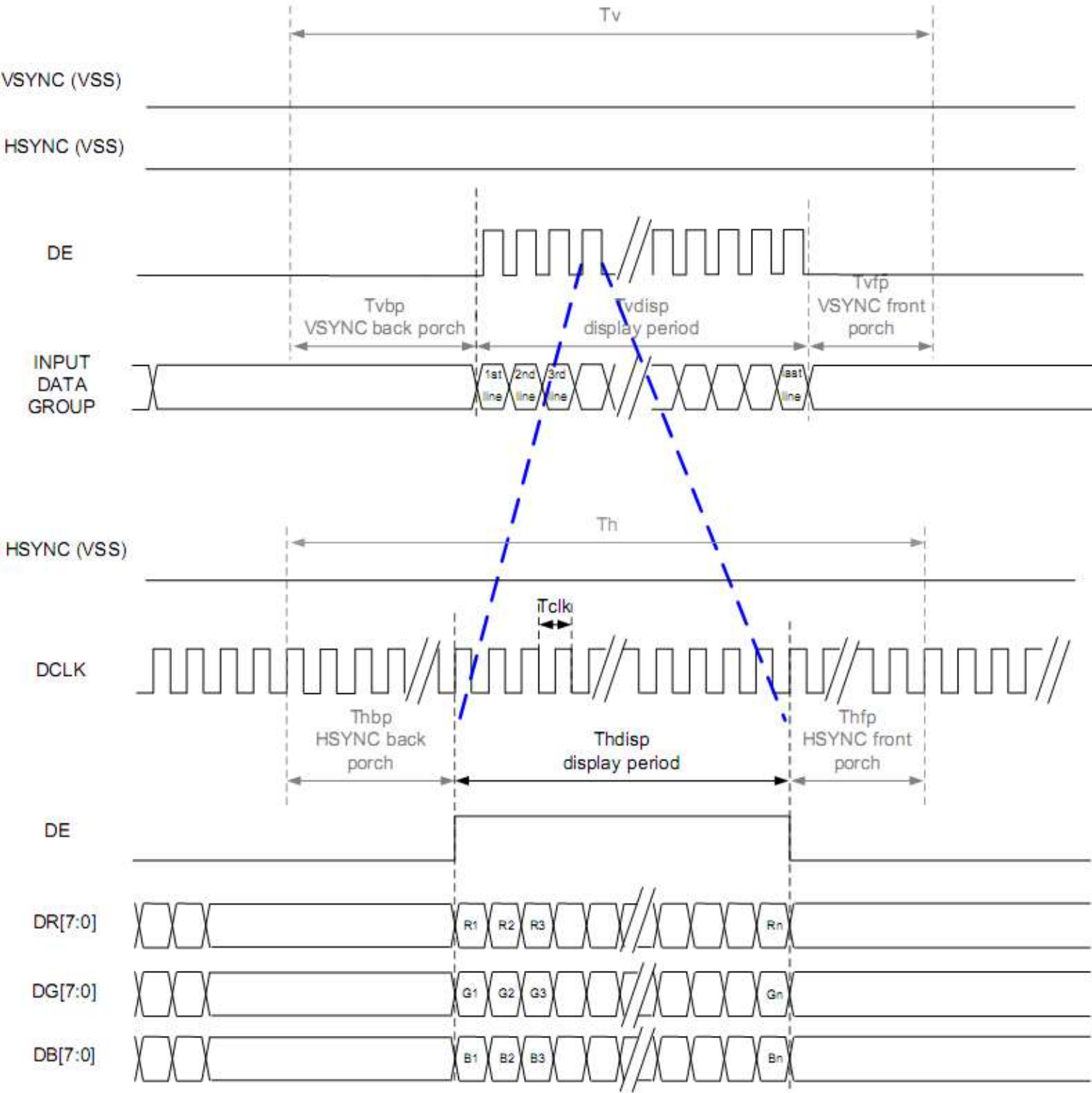



PRODUCT GROUP	REV	ISSUE DATE	
TFT- LCM PRODUCT	V0	2023-03-31	
SPEC. NUMBER AM-0430027A	SPEC. TITLE FN0430D027A Product Specification		PAGE 11 OF 30

5.2.2 SYNC-DE Mode



5.2.3 DE Mode



PRODUCT GROUP		REV	ISSUE DATE	
TFT- LCM PRODUCT		V0	2023-03-31	
SPEC. NUMBER AM-0430027A	SPEC. TITLE FN0430D027A Product Specification			PAGE 13 OF 30

## 5.2.4 Parallel 24-bit RGB Input Timing Table


Parallel 24-bit RGB Input Timing (PVDD=VDD=VDDI= 3.3V, AGND= 0V, TA=25°C)

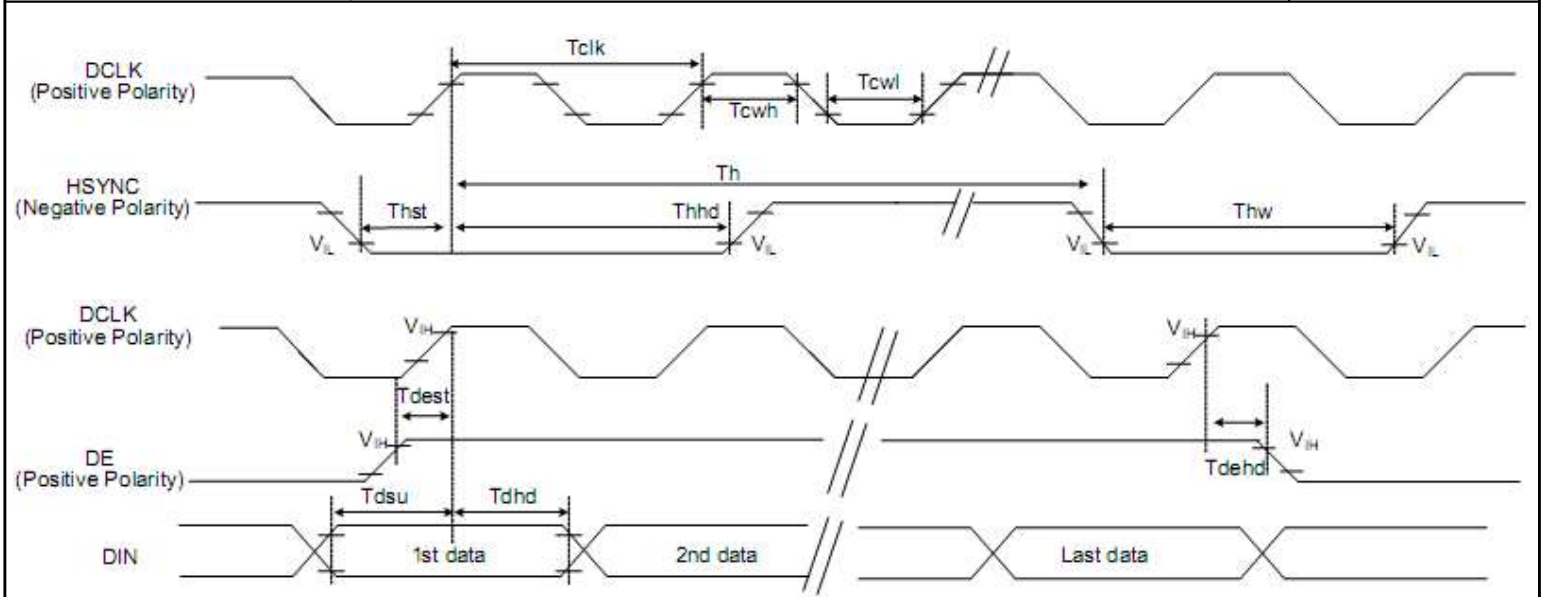
Parallel 24-bit RGB Interface Timing Table							
Item		Symbol	Min.	Typ.	Max.	Unit	Remark
DCLK Frequency		Fclk	23	25	27	MHz	.
HSYNC	Period Time	Th	808	816	848	DCLK	
	Display Period	Thdisp	800			DCLK	
	Back Porch	Thbp	4	8	24	DCLK	
	Front Porch	Thfp	4	8	24	DCLK	
	Pulse Width	Thw	2	4	8	DCLK	
VSYNC	Period Time	Tv	496	512	528	HSYNC	
	Display Period	Tvdisp	480			HSYNC	
	Back Porch	Tvbp	8	16	24	HSYNC	
	Front Porch	Tvfp	8	16	24	HSYNC	
	Pulse Width	Tvw	2	4	8	HSYNC	

- Note: 1. The minimum blanking time depends on the GIP timing of the panel specification  
2. To ensure the compatibility of different panels, it is recommended to use the typical setting.  
3. It is necessary to keep Tvbp =8 and Thbp =8 in sync mode. DE mode is unnecessary to keep it.  
4. The maximum DCLK Frequency is 27MHz. If the case needs faster DCLK





PRODUCT GROUP	REV	ISSUE DATE	
TFT- LCM PRODUCT	V0	2023-03-31	
SPEC. NUMBER AM-0430027A	SPEC. TITLE FN0430D027A Product Specification		PAGE 15 OF 30

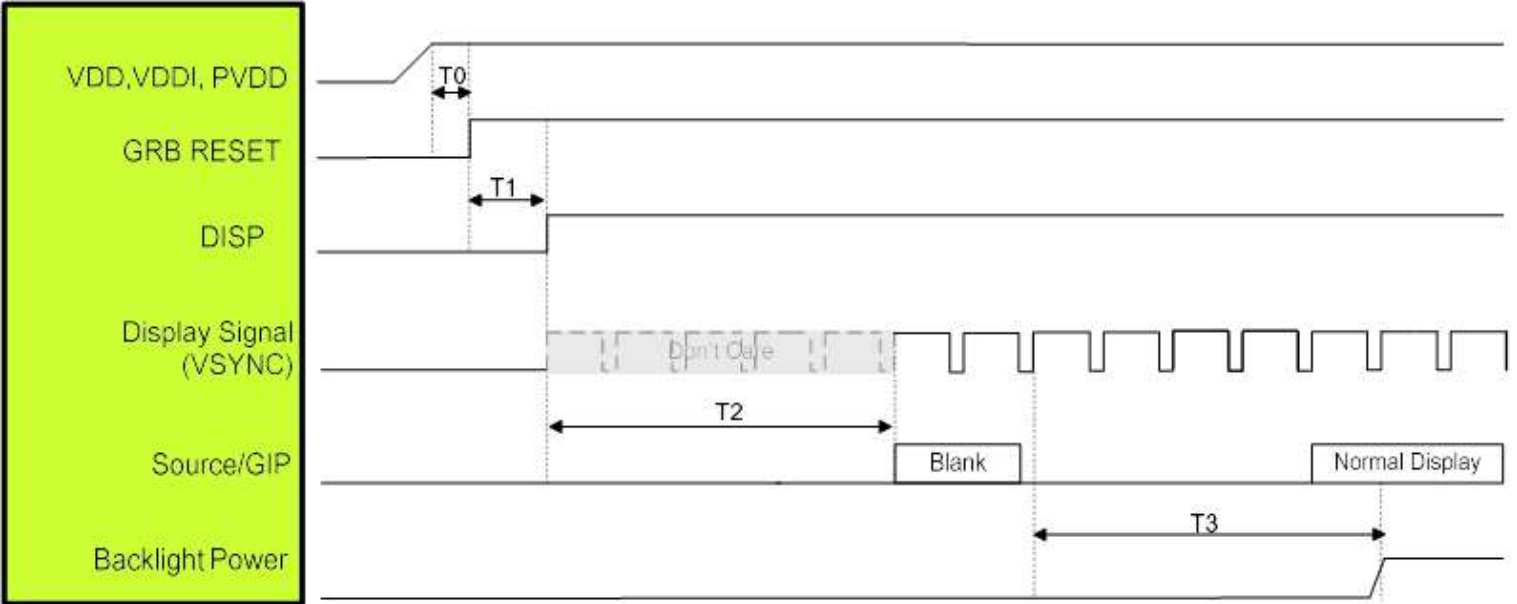


DC Electrical Characteristics (PVDD=VDD=VDDI= 3.3V, AGND= 0V, TA=25°C, Bare Chip)

Item	Symbol	Min.	Typ.	Max.	Unit	Conditions
CLK Pulse Duty	Tcw	40	50	60	%	
VSYNC Setup Time	Tvst	10	-	-	ns	
VSYNC Hold Time	Tvhd	10	-	-	ns	
HSYNC Setup Time	Thst	10	-	-	ns	
HSYNC Hold Time	Thhd	10	-	-	ns	
Data Setup Time	Tdsu	10	-	-	ns	
Data Hold Time	Tdhd	10	-	-	ns	
DE Setup Time	Tdest	10	-	-	ns	
DE Hold Time	Tdehd	10	-	-	ns	

### 5.4 Power On Sequence


#### 5.4.1 Internal Power Mode



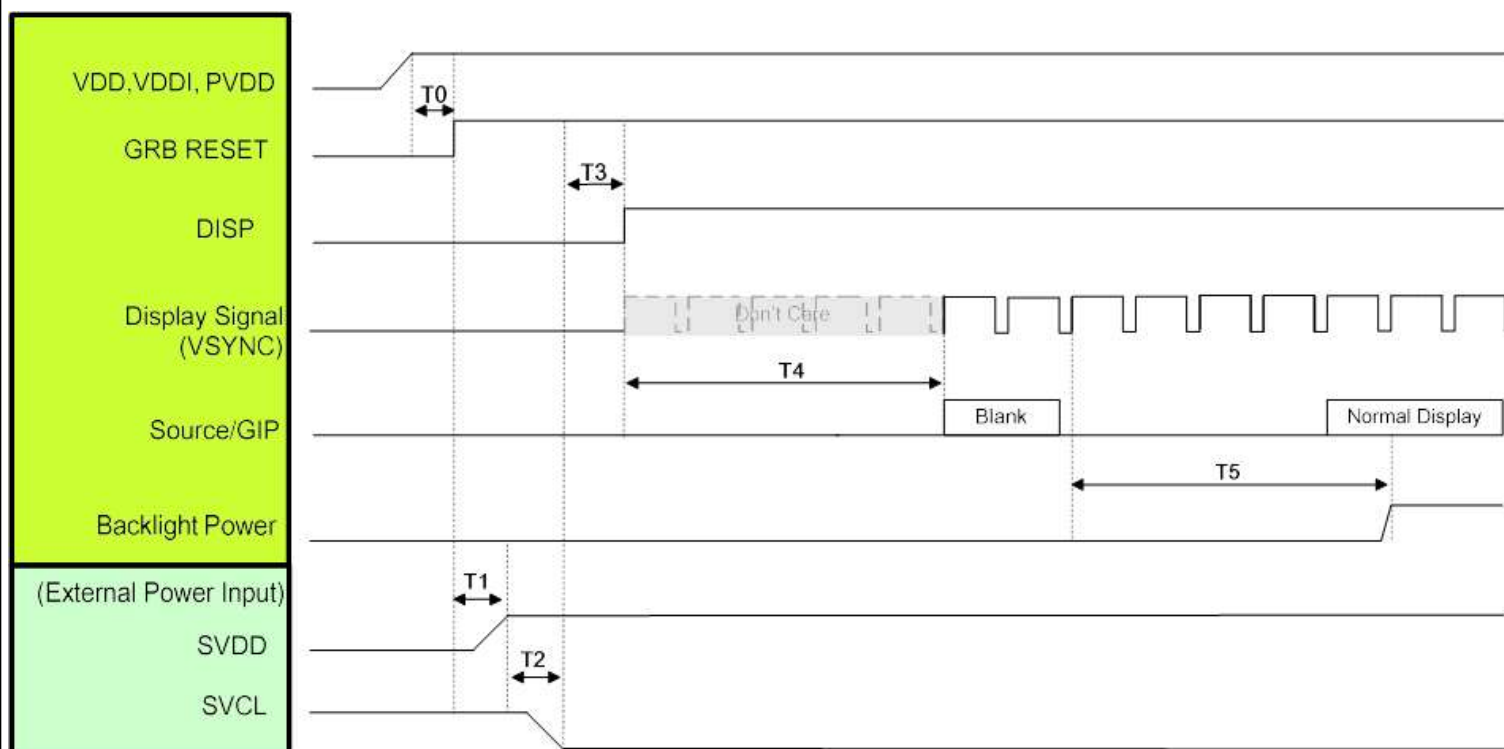
Symbol	Description	Time	Unit
T0	System power stability to GRB RESET signal	≥1	ms
T1	GRB RESET= "High" to DISP="High"	≥10	ms
T2	DISP="High" to Source/GIP scan blank	85	ms
T3	Display Signal input to Backlight power on (base on Display Signal Frame Rate 60Hz)	≥100	ms

- Note:
- When DISP pull “H” or “L”, IC will execute the internal power on or power off procedures .Please be careful about the timing of DISP and do not interrupt it during power on or power off procedure, otherwise unexpected errors will occur.
  - RGB interface Display signal: DCLK; VSYNC; HSYNC; DE; DR[7:0]; DG[7:0]; DB[7:0]
  - LVDS interface Display signal: DCLK P/N; RX[3:0] P/N



PRODUCT GROUP	REV	ISSUE DATE	
TFT- LCM PRODUCT	V0	2023-03-31	
SPEC. NUMBER AM-0430027A	SPEC. TITLE FN0430D027A Product Specification		PAGE 17 OF 30


## 5.4.2 External Power Mode with External Power Supply



Symbol	Description	Time	Unit
T0	System power stability to GRB RESET signal	≥1	ms
T1	GRB RESET= "High" to SVDD input	≥10	ms
T2	SVDD input to SVCL input	≥1	ms
T3	SVCL input to DISP="High"	≥1	ms
T4	DISP="High" to Source/GIP scan blank	85	ms
T5	Display Signal input to Backlight power on (base on Display Signal Frame Rate 60Hz)	≥100	ms

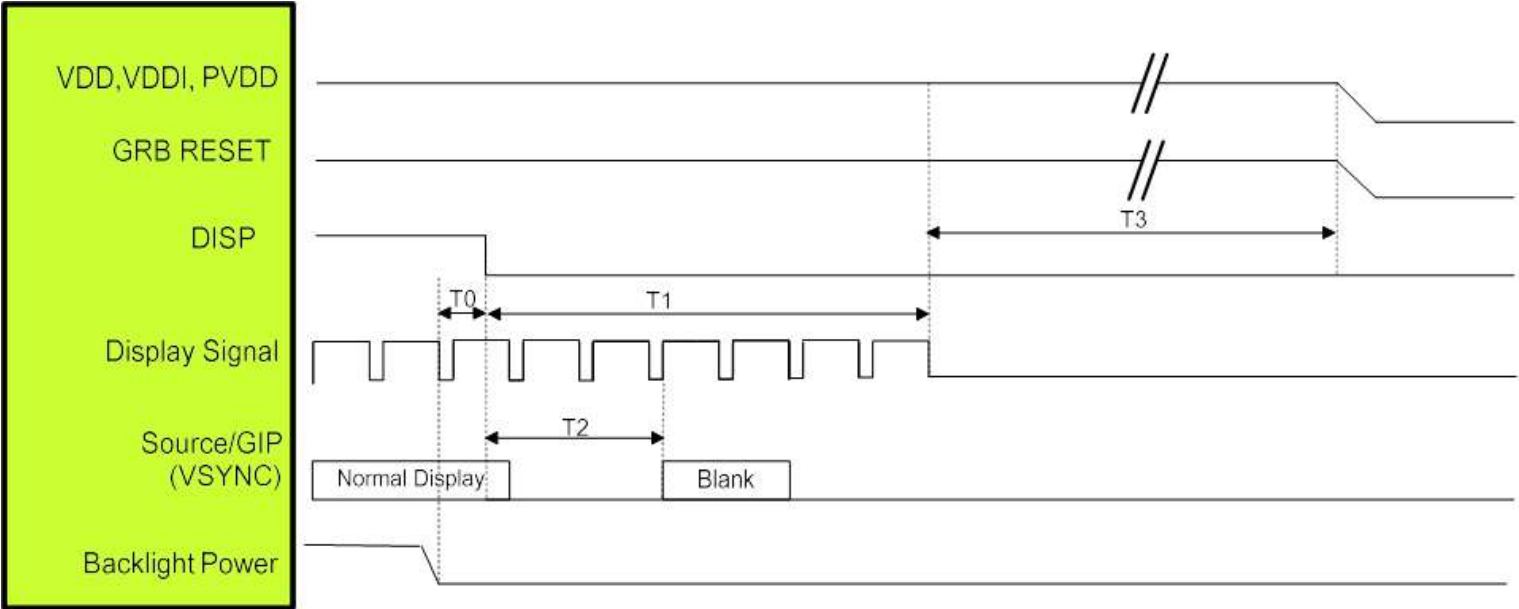
### Note:

- When DISP pull "H" or "L", IC will execute the internal power on or power off procedures .Please be careful about the timing of DISP and do not interrupt it during power on or power off procedure, otherwise unexpected errors will occur.
- RGB interface Display signal: DCLK; VSYNC; HSYNC; DE; DR[7:0]; DG[7:0]; DB[7:0]
- LVDS interface Display signal: DCLK P/N; RX[3:0] P/N

PRODUCT GROUP	REV	ISSUE DATE	
TFT- LCM PRODUCT	V0	2023-03-31	
SPEC. NUMBER AM-0430027A	SPEC. TITLE FN0430D027A Product Specification		PAGE 18 OF 30


## 5.5 Power Off Sequence

### 5.5.1 Internal Power Mode

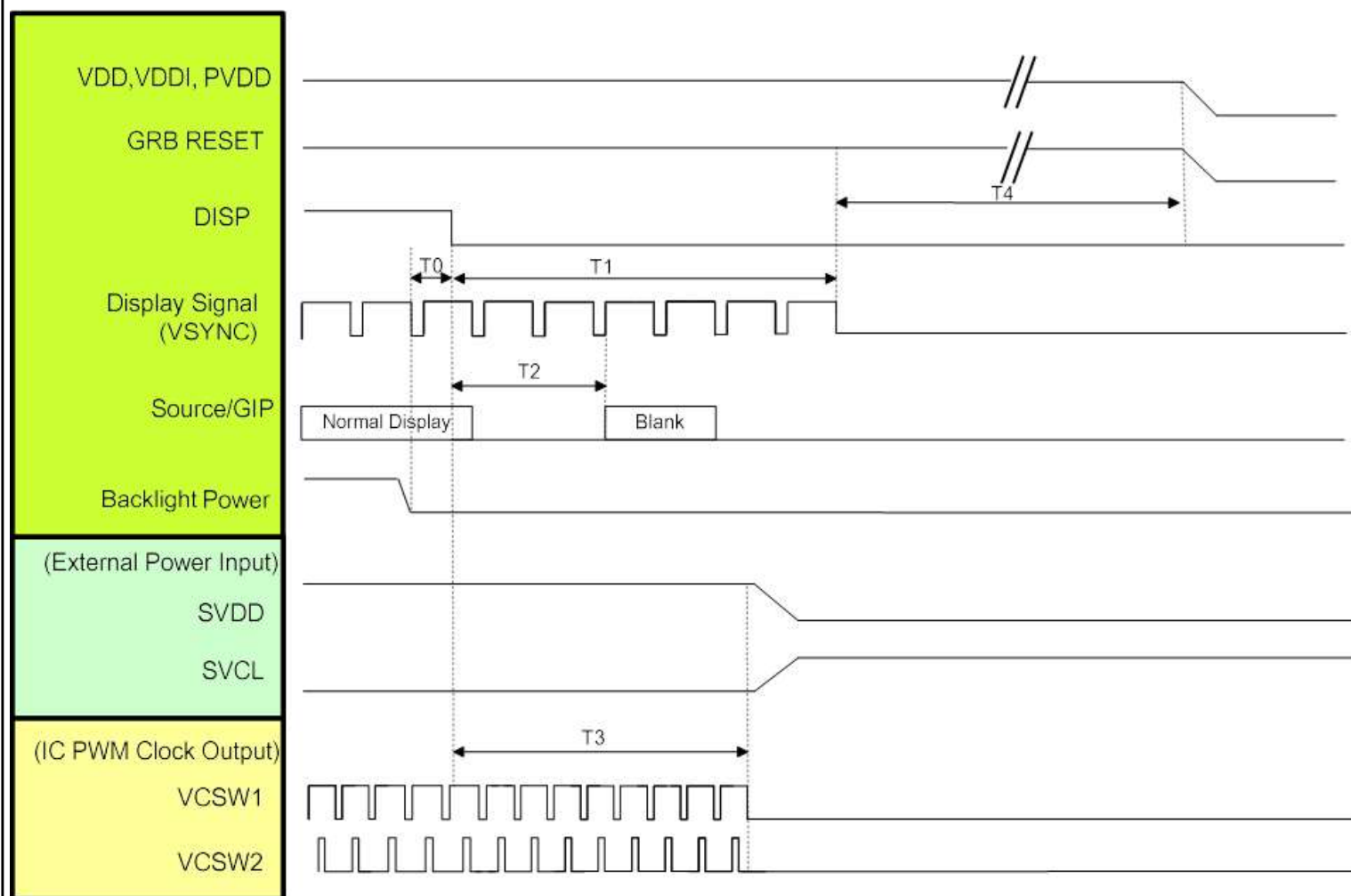


Symbol	Description	Time	Unit
T0	Backlight Power off to DISP="Low"	≥1	ms
T1	DISP="Low" to IC internal voltage discharge complete	100	ms
T2	DISP="Low" to Source/GIP scan blank (base on Display Signal Frame Rate 60Hz)	≤50	ms
T3	IC internal voltage discharge is completed to VDD/VDDI/PVDD off	>0	ms

- Note:
- When DISP pull “H” or “L”, IC will execute the internal power on or power off procedures .Please b e careful about the timing of DISP and do not interrupt it during power on or power off procedure, other wise unexpected errors will occur.
  - RGB interface Display signal: DCLK; VSYNC; HSYNC; DE; DR[7:0]; DG[7:0]; DB[7:0]
  - LVDS interface Display signal: DCLK P/N; RX[3:0] P/N

PRODUCT GROUP	REV	ISSUE DATE	
TFT- LCM PRODUCT	V0	2023-03-31	
SPEC. NUMBER AM-0430027A	SPEC. TITLE FN0430D027A Product Specification		PAGE 19 OF 30


## 5.5.2 External Power Mode with External Power Supply



Symbol	Description	Time	Unit
T0	Backlight Power off to DISP="Low"	≥1	ms
T1	DISP="Low" to IC internal voltage discharge complete	100	ms
T2	DISP="Low" to Source/GIP scan blank (base on Display Signal Frame Rate 60Hz)	≤50	ms
T3	DISP="Low" to SVDD /SVCL Power off	85	ms
T4	IC internal voltage discharge is completed to VDD/VDDI/PVDD off	>0	ms

Note:

- When DISP pull "H" or "L", IC will execute the internal power on or power off procedures .Please be careful about the timing of DISP and do not interrupt it during power on or power off procedure, otherwise unexpected errors will occur.
- RGB interface Display signal: DCLK; VSYNC; HSYNC; DE; DR[7:0]; DG[7:0]; DB[7:0]
- LVDS interface Display signal: DCLK P/N; RX[3:0] P/N

PRODUCT GROUP	REV	ISSUE DATE	
TFT- LCM PRODUCT	V0	2023-03-31	
SPEC. NUMBER AM-0430027A	SPEC. TITLE FN0430D027A Product Specification		PAGE 20 OF 30


## 6.0 OPTICAL SPECIFICATIONS /光学规格

### 6.1 Overview /概述

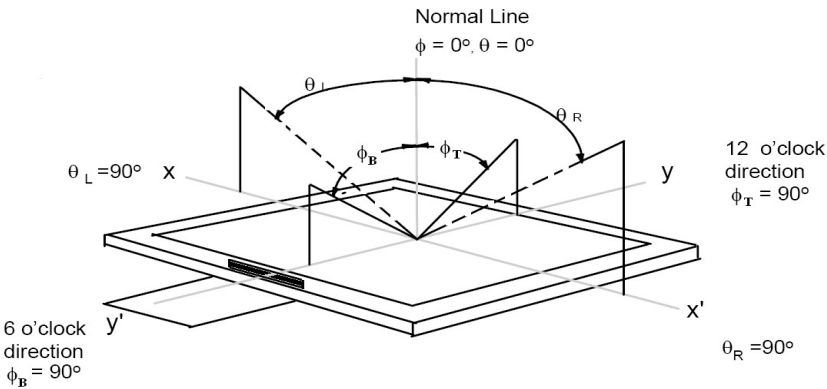
The test of optical specifications shall be measured in a dark room (ambient luminance  $\leq 1$ lux and temperature =  $25 \pm 2^\circ\text{C}$ ) with the equipment of Luminance meter system (Goniometer system and TOPCON BM-5) and test unit shall be located at an approximate distance 50cm from the LCD surface at a viewing angle of  $\theta$  and  $\phi$  equal to  $0^\circ$ . We refer to  $\theta\phi=0$  ( $=\theta 3$ ) as the 3 o'clock direction (the "right"),  $\theta\phi=90$  ( $=\theta 12$ ) as the 12 o'clock direction ("upward"),  $\theta\phi=180$  ( $=\theta 9$ ) as the 9 o'clock direction ("left") and  $\theta\phi=270$  ( $=\theta 6$ ) as the 6 o'clock direction ("bottom"). While scanning  $\theta$  and/or  $\phi$ , the center of the measuring spot on the display surface shall stay fixed.

### 6.2 Optical Specifications /光学规格

Item	Symbol	Condition	Min	Typ.	Max	Unit	Note
Viewing Angle	$\theta_L$	$Cr \geq 10$	-	80	-	deg	<a href="#">Note 1</a>
	$\theta_R$		-	80	-		
	$\psi_T$		-	80	-		
	$\psi_B$		-	80	-		
Contrast Ratio	Cr	$\theta=0^\circ$ $FF=0^\circ$	-	1200	-	-	<a href="#">Note 2</a>
Response Time	$Tr+Tf$		--	30	-	ms	<a href="#">Note 3</a>
Color Coordinate of CIE1931	$W_x$	$\theta=0^\circ$	0.257	0.287	0.317	-	<a href="#">Note 4</a>
	$W_y$		0.282	0.312	0.342		
	$R_x$		0.570	0.600	0.630		
	$R_y$		0.327	0.357	0.387		
	$G_x$		0.303	0.333	0.363		
	$G_y$		0.551	0.581	0.611		
	$B_x$		0.122	0.152	0.182		
	$B_y$		0.073	0.103	0.133		
Uniformity	U		80	--	--	%	<a href="#">Note 5</a>
Color Gamut			--	50	--	%	
Luminance	L		300	350	--	$\text{cd/m}^2$	<a href="#">Note 6</a>

PRODUCT GROUP	REV	ISSUE DATE	
TFT- LCM PRODUCT	V0	2023-03-31	
SPEC. NUMBER AM-0430027A	SPEC. TITLE FN0430D027A Product Specification		PAGE 21 OF 30

**Note 1:The definition of Viewing Angle**  
Refer to the graph below marked by  $\theta$  and  $\phi$ .



**Note2:The definition of Contrast Ratio**

Contrast Ratio(CR)=

Luminance When LCD is at "White" state

Luminance When LCD is at "Black" state

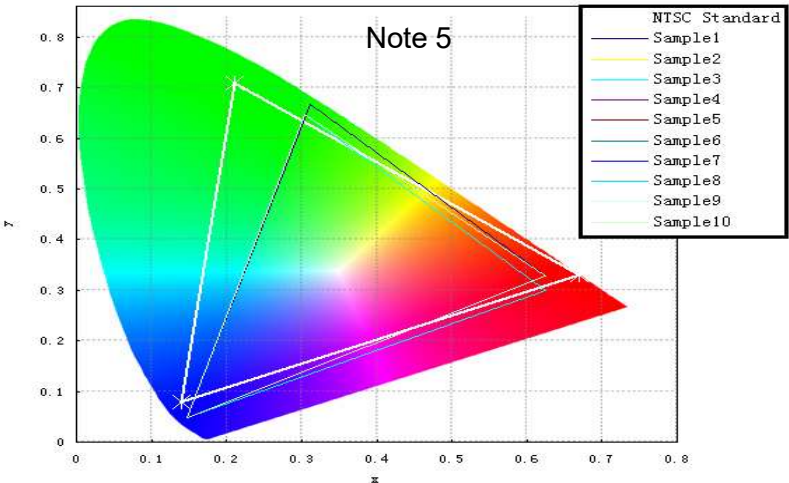
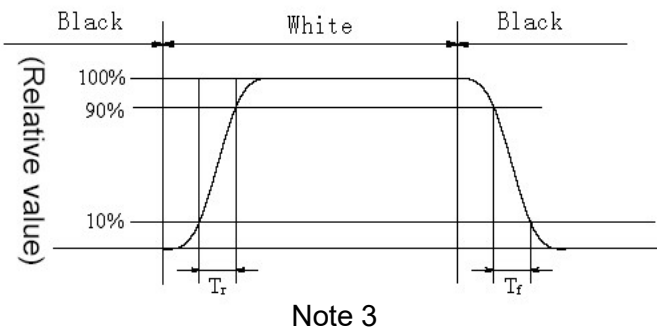
(Contrast Ratio is measured in optimum common electrode voltage)

**Note3:Definition of Response time.**(Test LCD using RD80S or similar equipments):  
The output sign also photo detector are measured when the input sign also are changed from "black " to "white" (Voltage falling time)and from "white" to "black" (Voltage rising time), respectively . The response time is defined as the time interval between the 10% and 90% of amplitudes . Refer to fi gures below.


**Note 4: Color Coordinates of CIE 1931**  
The test condition is at ILED=20mA and measured on the surface of LCD module at 25°C.  
Measurement equipment:CS2000 or similar equipments  
The Color Coordinate (CIE 1931) is the measurement of the center of the display shown in below figure.

**Note 5: Definition of Color of CIE Coordinate and NTSC Ratio.**

$$S = \frac{\text{area of RGB triangle}}{\text{area of NTSC triangle}} \times 100\%$$





PRODUCT GROUP	REV	ISSUE DATE	
TFT- LCM PRODUCT	V0	2023-03-31	
SPEC. NUMBER AM-0430027A	SPEC. TITLE FN0430D027A Product Specification		PAGE 22 OF 30


## 7.0 RELIABILITY TEST /可靠性测试

The Reliability test items and its conditions are shown in below.

No	Test Items	Conditions	Testing standard
1	High temperature storage test	Ta=+80°C, 240 hours	IEC60068-2-1:2007 GB2423.2-2008
2	Low temperature storage test	Ta=-30°C, 240 hours	IEC60068-2-1:2007 GB2423.1-2008
3	High temperature operation test	Ta=+70°C, 240 hours	IEC60068-2-1:2007 GB2423.2-2008
4	Low temperature operation test	Ta=-20°C, 240 hours	IEC60068-2-1:2007 GB2423.1-2008
5	High temperature & humidity (storage test)	Ta=+60°C, 90%RH max, 240 hours	IEC60068-2-78:2001 GB/T2423.3-2006
6	Thermal Shock Test	-30°C 30min~80°C 30min, Change time:5min 20cycle	Start with cold temperature End with high temperature IEC60068-2-14:1984,GB2423.22-2002
7	Vibration Test	Frequency range:10Hz-55Hz Stroke:1.5mm Sweep:10Hz~55Hz~10Hz 2 hours for each direction of X.Y.Z (6 hours for total)	IEC60068-2-6 GB/T17626.2
8	Mechanical shock	Half Sine Wave 100G 6ms,+X,+Y,+Z 3times for each direction	IEC60068-2-27 GB/T2423.5
9	Dropping test	Height: 60 cm, 1 corner, 3 edges, 6 surfaces	IEC60068-2-32:1990 GB/T2423.8-1995
10	ESD test	C=150pF, R=330 Ω, 5 points/panel Air:±8KV, 5 times; Contact: ±4KV, 5times; (Environment:15°C~35°C, 30%~60%RH,86Kpa~106Kpa)	IEC61000-4-2:2001 GB/T17626.2-2006 Class C

### Notes:

- 1、Maximum acceleration 20g, 1g=9.8m/s<sup>2</sup>
- 2、Maximum amplitude 5mm
- 3、Maximum acceleration =0.002 x F<sup>2</sup> (frequency Hz) x D (amplitude p-pmm)


PRODUCT GROUP	REV	ISSUE DATE	
TFT- LCM PRODUCT	V0	2023-03-31	
SPEC. NUMBER AM-0430027A	SPEC. TITLE FN0430D027A Product Specification		PAGE 23 OF 30

- **8.0 Precautions /注意事项**

- Please pay attention to the followings when you use this TFT LCD Panel.

- **8.1 Mounting Precautions /安装注意事项**

- (1) Use fingerstalls with soft gloves in order to keep display clean during the incoming inspection and assembly process.
- (2) You must mount a module using specified mounting holes (Details refer to the drawings).
- (3) Please make sure to avoid external forces applied to the Source PCB or FPC and D-IC during the process of handling or assembling. If not, It causes panel damage or malfunction.
- (4) Note that polarizers are very fragile and could be easily damaged. Do not touch, push or rub the exposed polarizers with glass, tweezers or anything harder than HB pencil lead. And please do not rub with dust clothes with chemical treatment.
- (5) Do not pull or fold the source D-IC which connect the source PCB or FPC and the panel.
- Do not pull or fold the LED wire.
- (6) After removing the protective film, when the surface becomes dusty, please wipe gently with absorbent cotton or other soft materials like chamois soaks with alcohol or purified water.
- Do not strong polar solvent because they cause chemical damage to the polarizer.
- (7) Wipe off saliva or water drops as soon as possible. Their long time contact with polarizer causes deformations and color fading.
- (8) Protection film for polarizer on the module shall be slowly peeled off just before use so that the electrostatic charge can be minimized.
- (9) Since the LCD is made of glass, do not apply strong mechanical impact or static load onto it. Handling with care since shock, vibration, and careless handling may seriously affect the product. If it falls from a high place or receives a strong shock, the glass may be broken.
- (10) Do not disassemble the module.
- (11) To determine the optimum mounting angle, refer to the viewing angle range in the specification for each model.
- (12) If the customer's set presses the main parts of the LCD, the LCD may show the abnormal display. But this phenomenon does not mean the malfunction of the LCD and should be pressed by the way of mutual agreement.
- (13) Do not drop water or any chemicals onto the LCD's surface.

PRODUCT GROUP	REV	ISSUE DATE	
TFT- LCM PRODUCT	V0	2023-03-31	
SPEC. NUMBER AM-0430027A	SPEC. TITLE FN0430D027A Product Specification		PAGE 24 OF 30

## 8.2 Operating Precautions /操作注意事项


- (1) Be careful for condensation at sudden temperature change. Condensation makes damage to polarizer or electrical contacted parts. And after fading condensation, smear or spot will occur.
- (2) Module has high frequency circuits. Sufficient suppression to the electromagnetic interference shall be done by system manufacturers. Grounding and shielding methods may be important to minimized the interference.
- (3) The electrochemical reaction caused by DC voltage will lead to LCD degradation, so DC drive should be avoided.
- (4) The LCD modules use C-MOS LSI drivers, so customers are recommended that any unused input terminal would be connected to Vdd or Vss, do not input any signals before power is turn on, and ground you body, work/assembly area, assembly equipments to protect against static electricity.
- (5) Do not exceed the absolute maximum rating value. (supply voltage variation, input voltage variation, variation in part contents and environmental temperature, and so on) Otherwise the Module may be damaged.
- (6) Design the length of cable to connect between the connector for back-light and the converter as short as possible and the shorter cable shall be connected directly.  
The longer cable between that of back-light and that of converter may cause the luminance of LED to lower and need a higher startup voltage(Vs).
- (7) Connectors are precise devices for connecting PCB and transmitting electrical signals. Operators should insert and unplug MDL in parallel when assembling MDL.
- (8) Do not connect or disconnect the cable to/ from the module at the "Power On" condition.
- (9) When the module is operating, do not lose CLK, ENAB signals. If any one these signals is lost, the LCD panel would be damaged.
- (10) Obey the supply voltage sequence. If wrong sequence is applied, the module would be damaged.
- (11) Do not re-adjust variable resistor or switch etc.
- (12) For the Q/Single/OC Product, If the LED designed side view, LED bar should be putted in the Long/short side ; Otherwise, its reliability and function may not be guaranteed.

注：  
 ①(1)涉及到Pol相关条目适用于OC/MDL出货产品，  
 ②(6)(7)涉及到connector相关适用于OC/MDL出货产品  
 ③ (12) 涉及到客户进行BLU设计，LED Bar位置需要避开GOA位置；

## 8.3 Electrostatic Discharge Control /静电放电控制

- (1) Since a module is composed of electronic circuits, it is not strong to electrostatic discharge. Make certain that treatment persons are connected to ground through wrist band etc. And don't touch interface pin directly. Keep products as far away from static electricity as possible.
- (2) Avoid the use work clothing made of synthetic fibers. We recommend cotton clothing or other conductivity-treated fibers.



PRODUCT GROUP	REV	ISSUE DATE	
TFT- LCM PRODUCT	V0	2023-03-31	
SPEC. NUMBER AM-0430027A	SPEC. TITLE FN0430D027A Product Specification		PAGE 25 OF 30

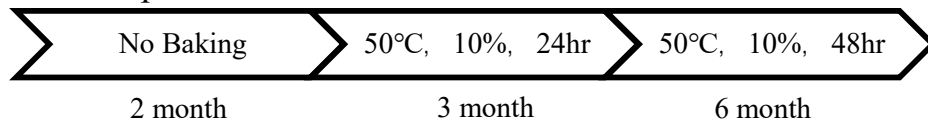
#### 8.4 Precautions for Strong Light Exposure /强光照射注意事项

It is not allowed to store or run directly in strong light or in high temperature and humidity for a long time; Strong light exposure causes degradation of polarizer and color filter.

#### 8.5 Storage Precautions /存储注意事项

When storing modules as spares for a long time, the following precautions are necessary.

- (1) The polarizer surface should not come in contact with any other object.  
It is recommended that they be stored in the container in which they were shipped.  
Temperature : 5 ~ 40 °C
- (2) Humidity : 35 ~ 75 %RH
- (3) Period : 6 months
- (4) Control of ventilation and temperature is necessary.
- (5) Please make sure to protect the product from strong light exposure, water or moisture.  
Be careful for condensation.
- (6) Store in a polyethylene bag with sealed so as not to enter fresh air outside in it.
- (7) Do not store the LCD near organic solvents or corrosive gasses.
- (8) Please keep the Modules/OC/FOG at a circumstance shown below Fig.



#### 8.6 Precautions for Protection Film /保护膜注意事项

- (1) Remove the protective film slowly, keeping the removing direction approximate 30-degree not vertical from panel surface, If possible, under ESD control device like ion blower, and the humidity of working room should be kept over 50%RH to reduce the risk of static charge.
- (2) In handling the LCD, wear non-charged material gloves. And the conducting wrist to the earth and the conducting shoes to the earth are necessary.


#### 8.7 Appropriate Condition for Display /适当的显示条件


- (1) Normal operating condition
  - Temperature: 0 ~ 40°C
  - Operating Ambient Humidity : 10 ~ 90 %
  - Display pattern: dynamic pattern (Real display)
  - Suitable operating time: under 12 hours a day.

- (2) Special operating condition

If the product will be used in extreme conditions such as high temperature, humidity, display patterns or 7\*24hrs operation time etc., It is strongly recommended to contact us for Application engineering advice. Otherwise, its reliability and function may not be guaranteed.

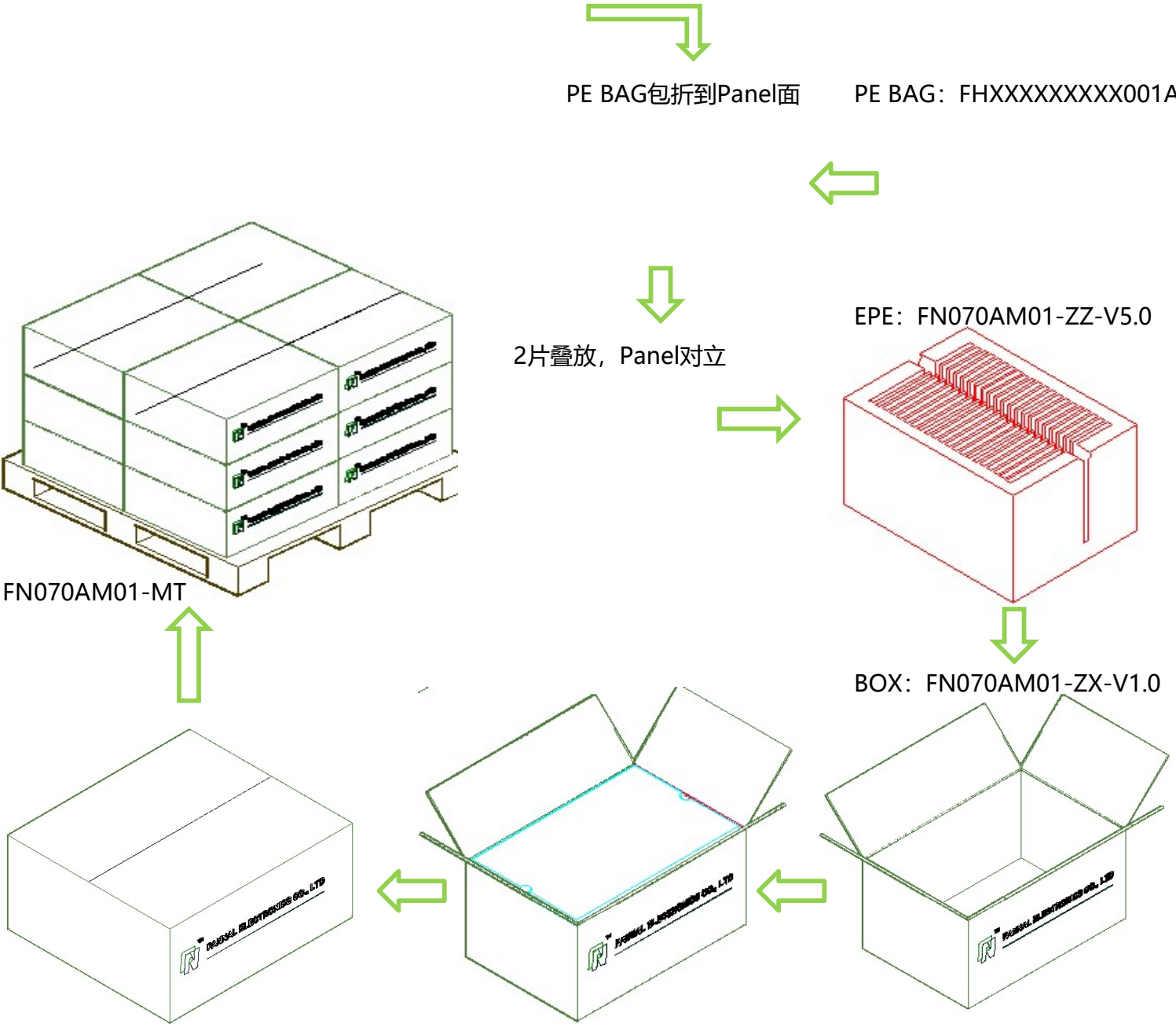
- (3) Black image or moving image is strongly recommended as a screen save.


PRODUCT GROUP		REV	ISSUE DATE	
TFT- LCM PRODUCT		V0	2023-03-31	
SPEC. NUMBER	SPEC. TITLE			PAGE
AM-0430027A	FN0430D027A Product Specification			26 OF 30
<ul style="list-style-type: none"><li>• (4) Lifetime in this spec. is guaranteed only when commercial display is used according to operating usages.</li><li>• (5) Please contact us in advance when you display the same pattern for a long time.</li><li>• (6) If the Module keeps displaying the same pattern for a long period of time, the image may be “sticked“ or “turn off” to the screen. To avoid image sticking, it is recommended to use a screen saver.</li><li>• (7) Do not exceed the absolute maximum rating value. (supply voltage variation, input voltage variation, variation in part contents and environmental temperature, and so on) Otherwise the Module may be damaged.</li><li>• (8) Dew drop atmosphere should be avoided.</li><li>• (9) The storage room should be equipped with a good ventilation facility and avoid to expose to corrosive gas , which has a temperature controlling system.</li><li>• (10) The LCD should be avoided to expose to corrosive gas for long time, ,the LCD may be affected by the gas as SO2 ,H2S etc.</li><li>• (11) When expose to drastic fluctuation of temperature (hot to cold or cold to hot) ,the LCD may be affected; Specifically, drastic temperature fluctuation from cold to hot ,produces dew on the LCD's surface which may affect the operation of the polarizer and the LCD.</li><li>• (12) Response time will be extremely delayed at lower temperature than the operating temperature range and on the other hand at higher temperature LCD may turn black at temperature above its operational range. However those phenomena do not mean malfunction or out of order with the LCD. The LCD will revert to normal operation once the temperature returns to the recommended temperature range for normal operation</li></ul>				
<b>8.8 Others /其他</b>				
<b>A. LC Leak /液晶泄露</b>				
<ul style="list-style-type: none"><li>• If the liquid crystal material leaks from the panel, it is recommended to wash the LC with acetone or ethanol and then burn it.</li><li>• In case of contact with hands, skin or clothes, it has to be washed away thoroughly with soap.</li><li>• If LC in mouth, mouth need to be washed, drink plenty of water to induce vomiting and follow medical advice.</li><li>• If LC touch eyes, eyes need to be washed with running water at least 15 minutes.</li></ul>				
<b>B. Rework /返工</b>				
<ul style="list-style-type: none"><li>• When returning the module for repair or etc., Please pack the module not to be broken. We recommend to use the original shipping packages.</li></ul>				
<b>C.</b> In order to prevent potential problems, flicker should be adjusted by optimizing the Vcom value in customer LCM Line (适用于Q/Single/OC出货产品)				

PRODUCT GROUP	REV	ISSUE DATE	
TFT- LCM PRODUCT	V0	2023-03-31	
SPEC. NUMBER AM-0430027A	SPEC. TITLE FN0430D027A Product Specification		PAGE 27 OF 30

9.0 PACKING INFORMATION(产品形态： LCM )

LCM MODEL	LCM Qty. in the Box	Carton Size(mm)	LCM Qty. in the Pallet
TBD			



PRODUCT GROUP	REV	ISSUE DATE	
TFT- LCM PRODUCT	V0	2023-03-31	
SPEC. NUMBER AM-0430027A	SPEC. TITLE FN0430D027A Product Specification		PAGE 28 OF 30

## 10.0 VISUAL INSPECTION CRITERIA FOR ALL CUSTOMERS /所有客户的目视检查标准

### 10.1 Sampling Method /抽样方法

Unless otherwise agreed upon in writing, the sampling inspection shall be applied to the Customers incoming inspection.

- 10.1.1 Lot size : 1 pallet per same model
- 10.1.2 Sampling type : Random sampling
- 10.1.3 Inspection level : II
- 10.1.4 Sampling table : MIL-STD-105E

### 10.2 Inspection Environment /检验环境

#### 10.2.1 Ambient conditions

- a. Ambient Temperature:  $25 \pm 3^{\circ}\text{C}$
- b. Relative Humidity:  $65 \pm 20\% \text{RH}$
- c. Ambient Illumination: 300-700LUX (Normal: 500LUX)

#### 10.2.2 Viewing Distance

The distance between the LCM and the inspector's eyes shall be at least 30cm-50cm

#### 10.2.3 Viewing Angle

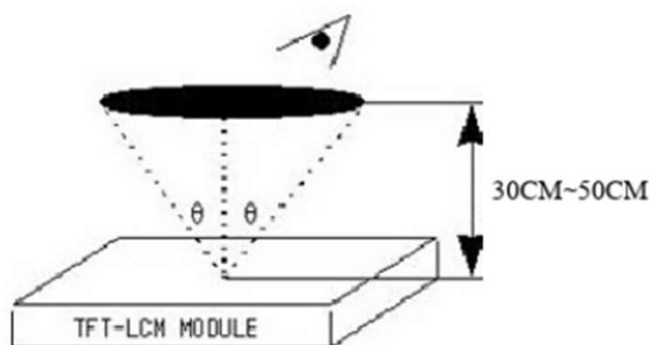
performing in front of the panel

[Vertical] :  $\pm 25^{\circ}$

[Horizontal] :  $\pm 40^{\circ}$

#### 10.2.4 Inspection Area:

Display Area (Active Area)



### 10.3 Definitions /定义

#### 10.3.1 Dark / Bright Spots

Points on display which appear dark/bright and usually result from the contamination. These defects do not vary in size or intensity (contrast) when contrast is varied.

#### 10.3.2 Dark / Bright Lines

Lines on display which appear dark/bright and usually result from the contamination.

#### 10.3.3 Polarizer Scratch


Lines on display which are seen across a darker background and do not vary in size.

#### 10.3.4 Polarizer Dent

White spots on display which appear against a darker background and do not vary in size.

#### 10.3.5 Bright Dot Defects

Dots (sub-pixels) on display which appear bright in the display area and visible through the 5%ND filter at Black Pattern.

PRODUCT GROUP	REV	ISSUE DATE	
TFT- LCM PRODUCT	V0	2023-03-31	
SPEC. NUMBER AM-0430027A	SPEC. TITLE FN0430D027A Product Specification		PAGE 29 OF 30

#### 10.3.6 Dark Dot Defects

Dots(sub-pixels)on display which appear dark in the display area at R.G.B Color Pattern.

#### 10.3.7 Line Defects

All line defects on display which appear brigh/dark such as vertical,horizontal,or cross lines.

#### 10.3.8 Mura

Mura on display which appears darker/brighter against background birghtness on parts of display area.

#### 10.3.9 BM Defects

Bright(white)Points on display which are off BM(Black Matrix).

#### 10.3.10 Visual Inspection

Inspection for LCM when the unit turns on.

#### 10.3.11 Appearance Inspection

External inspection for LCM when the unit turns off.

#### 10.3.12 Other

Defects which cannot be classified into the above defect definitions.

Note 1: Bright& Dark dots are not smaller than a sub-pixel(Dots smaller than a sub-pixel are not counted as defect dots)

### 10.4 Inspectin Criteria /检验标准

Refer to 《TFT LCM general inspection standard》

### 10.5 Verification /验证

The supplier can verify the defective LCMs to segregate the responsibilities at customer's facility or can request the Customer to ship the defective LCMs to assigned place for verification


This verificatin result shall be agreed mutually buy the Customer and Supplier. This result can be corrected/changed after detail failure analysis at Supplier's facilities.

### 10.6 Supplier Induced Defects /供应商引起的缺陷

All of the Supplier induced defective LCMs shall be returned to the Supplier for repair or replacement.

Bfore return the defective LCMs, the Customer needs Supplier's confirmatin with RMA Number.

All of the returned LCMs shall be returned to the Customer within agreed time period.

PRODUCT GROUP	REV	ISSUE DATE	
TFT- LCM PRODUCT	V0	2023-03-31	
SPEC. NUMBER AM-0430027A	SPEC. TITLE FN0430D027A Product Specification		PAGE 30 OF 30

### 10.7 Customer Induced Defects /顾客引起的缺陷

The Customer can return the customer induced defective LCMs to the Supplier for repair.  
The repair cost for Customer induced defective LCMs shall be agreed with both parties, Customer and Supplier.

### 10.8 Warranty Period /质量保证期

In-warranty period is Eighteen(18)Months from manufacturing month of LCM

Note :

- Eighteen months are composed of twelfth months in-warranty period and sixth months distribution period
- The manufacturing Month is on the LCMs as Supplier's serial No.

### 10.9 Repair Warranty /维修保证书

Repair warranty is Twelve(12)Months from repaired month for repaired LCMs

Note : a. The Label for repair will be added after repairing.

### 10.10 Warranty avoidance /避免担保

The warranty will be avoided in cases of below:

- When the warranty period is expired.
- The Customer induced defective LCMs.
- When the LCMs were repaired by 3rd party without Supplier's approval.
- When the LCMs were treated like Disassemble and Rework by the Customer and/or Customer's representatives without Supplier's approval.

### 10.11 Others /其他

If any problems arise with the LCMs supplied by supplier, the customer and supplier will cooperate and make efforts to solve it with mutual confidence and respect